

Mci

MUAR CATHAY INDUSTRIES
Advancing steel fabrications through design : components : manufacture

MUAR CATHAY INDUSTRIES SDN. BHD
Pos 764, Lot 2407, Pt Bakar Darat, Off Jalan Sri Tanjong,
84010 Muar, Johor, Malaysia.

TEL: +606 9813399
FAX: +606 9813366

<http://www.cathay.com.my>

admin@cathay.com.my

Company Profile

Muar Cathay Industries 2010 / 2011

CONTENTS

▶ Introduction	3
▶ Manufacturing facilities	3
▶ Company Information	4
▶ Management Organization Chart	5
▶ Guardrail Products	7
▶ Architectural Products	7
▶ Building Materail & Windows Covering Products	8
▶ Aluminium Projects	9
▶ Pre Engineering Steel Structural Projects	10
▶ Guardrail Projects	10

Introduction

Muar Cathay Industries Sdn Bhd (MCI) is incorporated in Year 1998. MCI is formed to build a strong team to focus on building industries and commercial sector. We specialize in fabricating of metal products, steel structure, aluminium, architectural products, commercial signboard and blinds.

In order to meet the future demand, the company provides ONE-STOP-CENTER to meet the needs and has form a strong team with experienced designer and technical personel to fulfill customer's requirements.



MCI office & factory

The company's management has more than 40 years of experience in design, fabrication and installation of aluminium architectural products. To the change of the trends in special industry field, we are investing in manufacturing metal door and window frame, roller shutter, metal perforation, custom made metal or aluminium ceiling and highway guardrail.

The Associates

1) Cathay Signcrafts and Awning Co.(CSA)

- **CSA** is the origin of **MCI**, Which is established in 1976. **CSA** is appointed as authorized distributor and dealer of **Hunter Douglas (M) Sdn. Bhd** since 1978 and franchise of starlite window covering products.

2) AICON (M) SDN.BHD.

- A related company of **MCI**, incorporated in 1984. Join the construction industry in 1985.

- The company has completed the following projects in Malaysia:
 (a) Housing Estate
 (b) Factories
 (c) Resort

Manufacturing Facilites

Machinery and Equipment

- Hydraulic Press Bending Machine
- Hydraulic Shearing Machine
- Euromac CNC Hydraulic Punching Machine
- Euramac Variable angle Notching Machine
- CNC Cutting and Punching Machine
- CNC Curve Forming Machine
- SKB Roller Shutter Forming Machine
- Boschert CNC Hydraulic Punching Machine
- Router for Alum. Composite Panel
- Strip Ceiling Forming Machine
- Lorry Crane
- Pile-driver for Guard Rail Post
- Guard Rail Forming Machine
- Forklift
- Skylift



Boschert CNC Hydraulic Punching Machine



Pile-driver

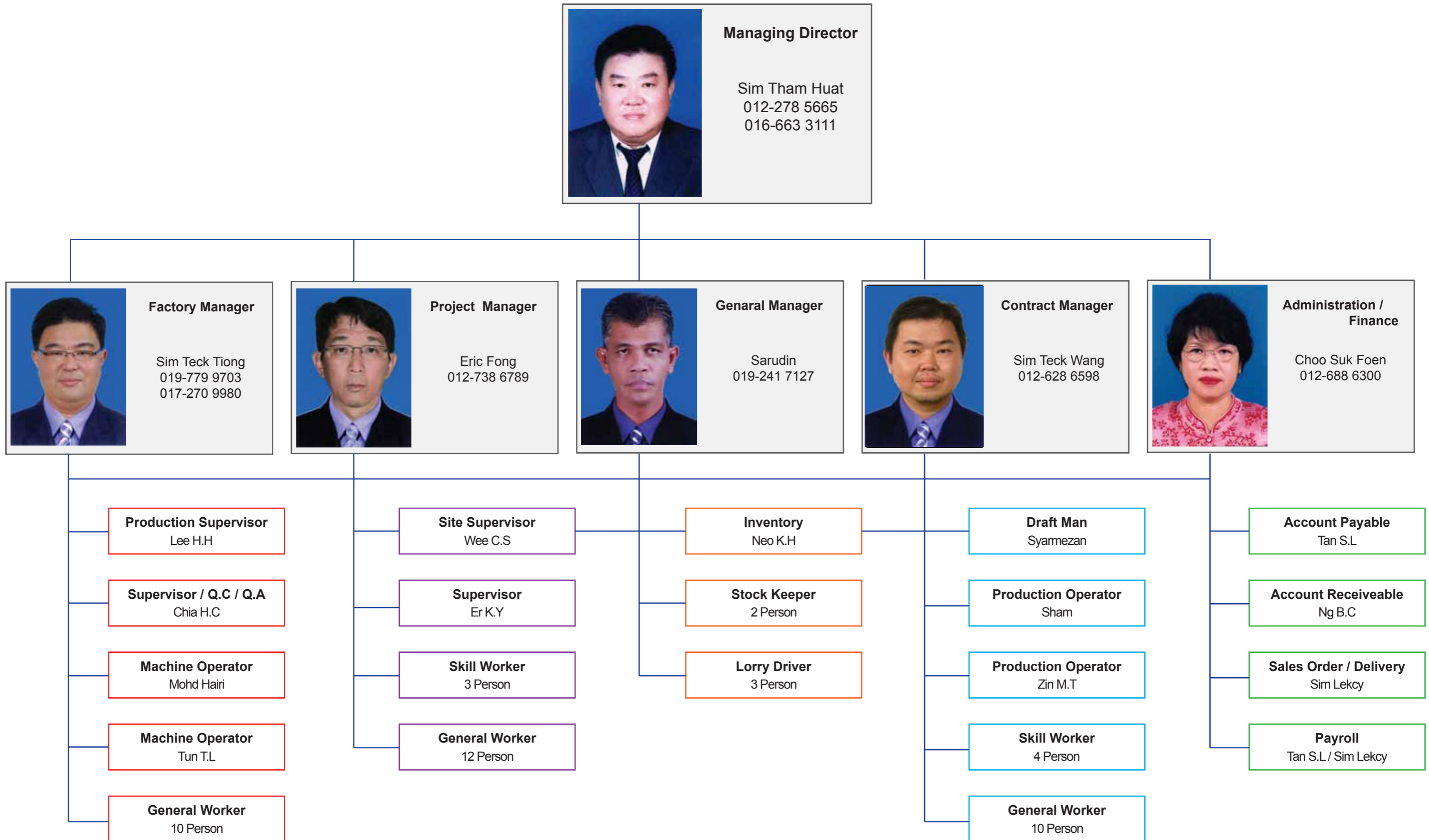


Hydraulic Press Bending Machine

Company Information

NAME	:	MUAR CATHAY INDUSTRIES SDN. BHD.
COMPANY REGISTRATION NO.	:	465954-V
CORPORATE OFFICE	:	Pos 764, Lot 2407, Pt Bakar darat, Off Jalan Sri Tanjong, 84010 Muar, Johor, Malaysia.
TELEPHONE NUMBER	:	(606) 981-3399
FACSIMILE NUMBER	:	(606) 981-3366
EMAIL	:	admin@cathay.com.my
WEBSITE	:	www.cathay.com.my
DATE OF INCORPORATION	:	20 JULY 1999
PLACE OF INCORPORATION	:	MALAYSIA
AUTHORISED CAPITAL	:	RM 5,000,000.00
COMPANY AUDITOR	:	CROWE HORWATH
COMPANY DIRECTORS	:	SIM THIAM HUAT CHOO SUK FOEN
BANKER	:	MAYBANK BHD PUBLIC BANK BHD UOB BANK BHD
Land Covering Area	:	25,935.8 m ²

Muar Cathay Industries Sdn. Bhd. Management Organization Chart (As of August 16, 2010)



Muar Cathay Industries Sdn. Bhd has the products, technical expertise and services that help you design, build, renovate and maintain buildings that are more striking, cost-effective and trouble-free than ever before. By providing the products and services that you and your customers need, we can help enhance your chances of success on every job.

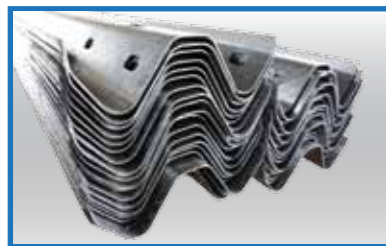
Highway Guardrail

MCI Guardrail is a widely accepted highway safety product used the world over as a safety system providing not only traffic delineation, but also protection in the event of vehicular loss of control. Installed in the median of a divided highway, or along the curb lanes of highways and two-lane roads, the continuous steel guardrail absorbs the shock of vehicle impact and guides the vehicle in the direction of the traffic flow.

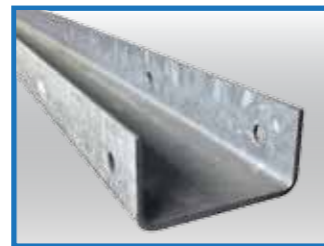
The net result of this system is to reduce the tendency for out-of-control vehicles to rebound into the path of following or on-coming traffic.

Main Products

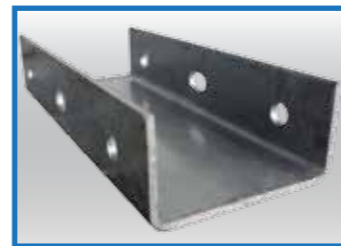
Guardrail beam and post, terminal units.



Guardrail Beam



Post



Packer

Architectural Products

Custom made Metal Ceiling

- Clip In Ceiling Plank
- Hook On Ceiling Plank
- Lay On Ceiling Plank
- Perimeter Panel for Wall Trim
- "W" and "L" Angle for Wall Trim



Custom made Metal Ceiling

Wall Cladding

- Aluminium Cladding Panel

Metal Perforation

- Electro Galvanize Steel and Aluminium



Wall Cladding

Building Material Products

Rain Water Gutter

- Stainless steel

Roller Shutter

Metal Door and Window Frame

- Electro Galvanize and Cold Roll Steel

Franchise Starlite Window Covering Products

Venetian Blinds

- 16mm Micro Blinds
- 25mm Slim Blinds

Vertical Blinds

- 127mm

Authorised Dealer Luxaflex® Window Covering Products

Transform your home. From blinds to shades to shutters, our window coverings offer you a large selection of choices in sun protection, light and privacy control. Choose from wide range of styles, colours, textures, fabrics, materials and finishes.

Main Products

- Venetian Blinds
- Vertical Blinds
- Wooden Blinds
- Duette Fashion Shades
- Helioscreen Sun Shades
- Retractable Fabric Awning
- Roll Up Insect Screen
- Shower Screen



Venetian

Vertical

Roller

Silhouette

Wooden

Muar Cathay Industries Sdn. Bhd has the products, technical expertise and services that help you design, build, renovate and maintain buildings that are more striking, cost-effective and trouble-free than ever before. By providing the products and services that you and your customers need, we can help enhance your chances of success on every job.

Aluminium Works

Project	Scope of Works	Year
ASE Electronic, Penang	- Luxalon Honeycomb Panel - External Cladding	2000
Technology Park Malaysia Bukit Jalil , K.L.	- Suspended Ceiling - Aluminium Glazing Window - Luxalon Sun Louvres - Metal Roofing & Cladding	2002
University Utara Malaysia Sintok , Kedah	- Aluminium Composite Panel Cladding - Luxalon Ceiling	2002
C.I.Q Pengkalan Hulu Perak	- Luxalon Cladding - Luxalon Sun Louvres - Toll Booth	2003
Sirim, Kawasan Perindustrian Rasa, Hulu Selangor.	- Suspended Ceiling, Luxalon Ceiling - Luxalon Sun Louvres, Curve Ceiling - Composite Panel Cladding & Canopy	2004
University Tenaga Nasional Muadzam Shah	- Luxalon Ceiling, Luxalon Sun Louvres - Composite Panel Cladding & Canopy	2006
HP Factory, Johor Bahru	- Curtain Wall - Composite Panel Cladding & Canopy	2007
Johor State Admin Centre, Bandar Nusajaya	- Aluminium Roof Shading Devices In Woodgrain	2007-2008
Senai - Desaru Expressway	- Composite Panel Cladding - 100mm Strip Ceiling - Toll Booth	2009



Curve Ceiling



Composite Panel Cladding



Honeycomb Panel Cladding

Pre Engineering Steel Structural

Project	Scope of Works	Year
Motorised Portable Shed Kepple Shipyard, Singapore	- Steel Structural	From 2005 (Still going on)
Senai - Desaru Expressway	- Structural Steel Frame For Toll Plaza & Canopy	2009



Motorised Portable Shed Kepple Shipyard, Singapore



Structural Steel Frame For Toll Plaza

Guardrail Works

Project	Scope of Works	Year
Senai - Desaru Expressway	- Highway Guardrail & Post	2009
Johore & Malacca (JKR)	- New & Replace works	2009
Kajang SILK Highway	- Maintenance Works	2010



Maintenance Works (Kajang SILK Highway)



Senai - Desaru Expressway